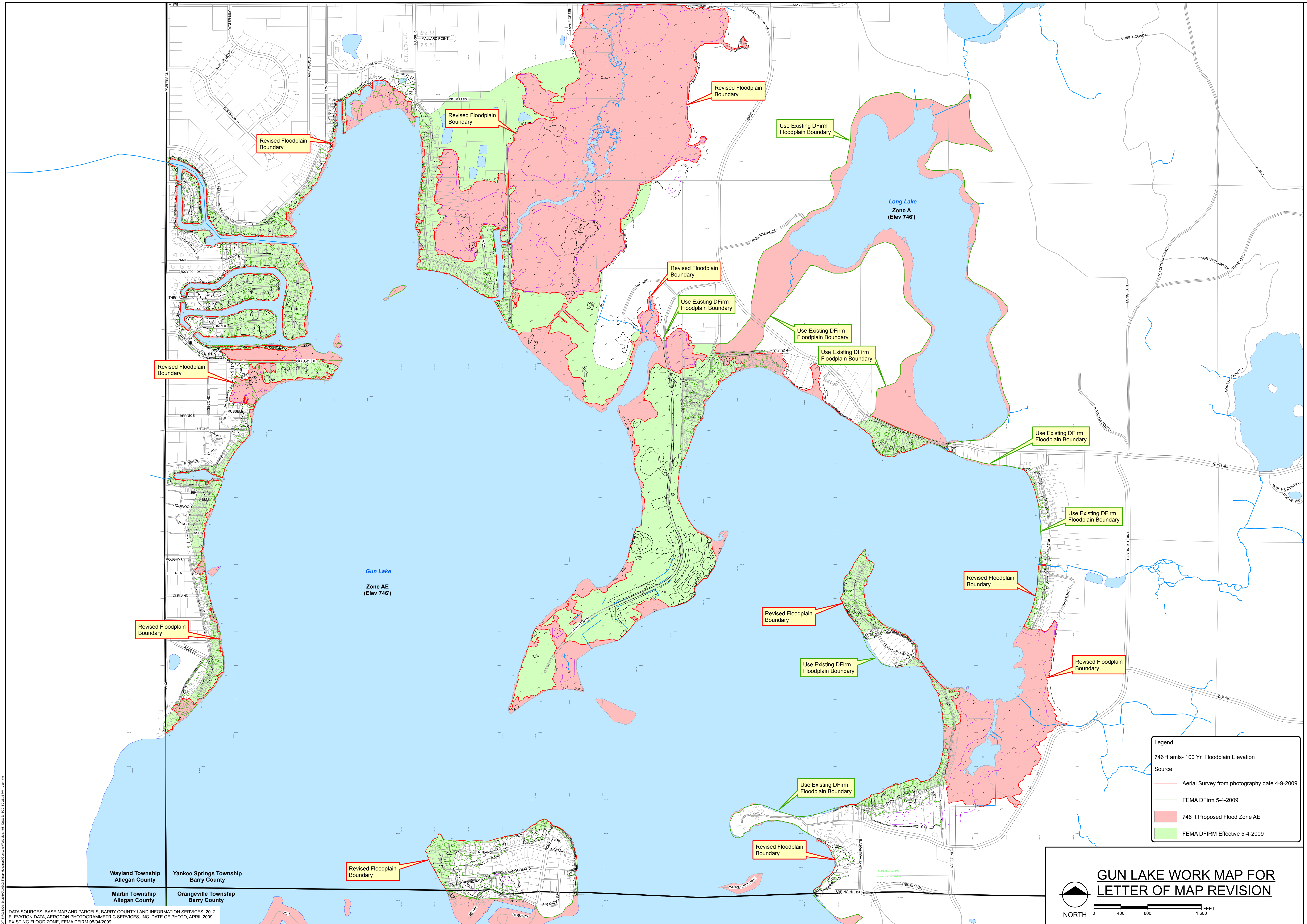


Yankee Springs Township
Barry County, Michigan
Floodplain Study



Legend

746 ft amsl- 100 Yr. Floodplain Elevation

Source

- Aerial Survey from photography date 4-9-2009
- FEMA DFirm 5-4-2009
- 746 ft Proposed Flood Zone AE
- FEMA DFIRM Effective 5-4-2009

GUN LAKE WORK MAP FOR LETTER OF MAP REVISION

NORTH

0 400 800 1,600 FEET

DATA SOURCES: BASE MAP AND PARCELS, BARRY COUNTY LAND INFORMATION SERVICES, 2012. ELEVATION DATA, AEROCOON PHOTOGAMMETRIC SERVICES, INC. DATE OF PHOTO, APRIL 2009. EXISTING FLOOD ZONE, FEMA DFIRM 05/04/2009.

Revised for submittal to FEMA 02/18/2013
Issued for submittal to FEMA 10/19/2012

Drawn By:
Designer:
Reviewer:
Manager:

Hard copy is intended to be 24"x36" when plotted. Scale(s) indicated and graphic quality may not be accurate for any other size.

PROJECT NO.
G120300

SHEET NO.
1